



**URhulumente
weNtshona Koloni**

ImiCimbi yeNkcubeko
nezemiDlalo



Western Cape Language Committee

Wes-Kaapse Taalkomitee

IKomiti yeeLwimi yeNtshona Koloni

ISicwangciso sokuSebenza soNyaka

2018/2019

ISicwangciso sokuSebenza soNyaka

2018/19



IKomiti yeeLwimi yeNtshona Koloni

ISicwangciso
sokuSebenza
soNyaka

2018/19



IMBULAMBETHE

ISicwangciso sokuSebenza soNyaka seKomiti yeeLwimi yeNtshona Koloni sijolise ekuphumezeni uMthetho weLwimi wePhondo leNtshona Koloni, uMthetho 13 ka-1998, noMgaqo-nkqubo weLwimi waseNtshona Koloni. Injongo yeqhinga kukuqhuba nokuqinisekisa ukusetyenziswa ngokulinganayo kweelwimi ezintathu ezisemthethweni zaseNtshona Koloni, isiBhulu, isiNgesi nesiXhosa, nokuphakamisa umgangatho weelwimi ebezifudula zihlelelekile ezifana noLwimi lokuThetha ngeZandla lwaseMzantsi Afrika nokusetyenziswa kwazo.

Ngokweengcebiso zeKomiti yeeLwimi sizinikele ekuqinisekiseni ukuba sifikeleleka eluntwini ngokubanzi, siwavule ngakumbi amathuba, singayilibalanga imimandla esemaphandleni yeNtshona Koloni, ukuqinisekisa ukuba wonke umntu uyakwazi ukuzifumana iinkonzo ezibonelelwa nguRhulumente weNtshona Koloni.

Kuyimfuneko ukuba sizisebenzise iingcebiso zeengcali zamalungu eKomiti yeeLwimi ukuze sithathe izigqibo ezifanelekileyo kwimiba yeelwimi yaye sizinonophele neenkono zeengcali ukuze siqinisekise ukuphunyezwa koMgaqo-nkqubo weLwimi waseNtshona Koloni. Ngokuhambelana noMthetho woLawulo lweMali kaRhulumente, ka-1999 (uMthetho nomb. 1 ka-1999) kunye neMithetho yeCandelo loLawulo-mali leSizwe, iKomiti yeeLwimi yeNtshona Koloni inikezela ngeSicwangciso sayo soNyaka sokuSebenza sowama-2018/19.

AMarais

ANROUX MARAIS

UMphathiswa weMicimbi yeNkcubeko neMidlalo eNtshona Koloni

UTYIKITYO OLUSESIKWENI

Ndiyaniseka okokuba esi Sicwangciso soNyaka sokuSebenza:

- saphuhliswa yiKomiti yoLwimi yeNtshona Koloni phantsi kwesikhokhelo samagosa eSebe leMicimbi yeNkcubeko neMidlalo;
- saqulunqwa ngokuhambelana nesiCwangciso esikhoyo seQingha seKomiti yoLwimi lweNtshona Koloni; yaye
- sibonisa ngokuchanekileyo ekujoliswe kuko kokusebenza ethe iKomiti yoLwimi yeNtshona Koloni yazama ukukufezekisa ngokuthambekele kwizibonelelo ezinikezelweyo kuhlahlo lwabiwo-mali lowama-2018/19.

Brenda Rutgers



IGosa eliyiNtloko leMali

Utyikityo

Jane Moleleki



IGosa elinika ingxelo

Utyikityo

Brent Walters



INtloko yeSebe leMicimbi
yeNkcubeko neMidlalo

Utyikityo

Ivunywe ngu:

Anroux Marais



UMphathiswa weMicimbi
yeNkcubeko neMidlalo eNtshona
Koloni

Utyikityo

OKUQULATHIWEYO

ICANDELO A: INGABULAZIGCAWU	2
1 Umbono	Error! Bookmark not defined. 2
2 Umnqophiso	2
3 Iimpawu zentsulungeko.....	2
4 Izigunyaziso zomthetho nezinye.....	2
4.1 Izigunyaziso zoMgaqo-siseko.....	Error! Bookmark not defined.
4.2 Izigunyaziso zomthetho.....	3
4.3 Izigunyaziso zomgaqo-nkqubo	Error! Bookmark not defined.
4.4 Izigwebo zenkundla ezifanelekileyo	4
4.5 Amanyathelo omgaqo-nkqubo acwangcisiweyo.....	4
5 Uhlahlelo lwesimo	4
5.1 Imeko ekusetyenzwa phantsi kwayo.....	5
5.2 Ubume beSebe	6
5.3 Ingcaciso ngeenkqubo zeqhinga lokusebenza.....	6Error! Bookmark not defined.
6 Iziphumo ezisekelwe kwiinjongo zeqhinga lokusebenza	7
ICANDELO B: IINJONGO ZEQHINGA	8
7 Inkqubo: IKomiti yeeLwimi yeNtshona Koloni.....	8
8 Iinjongo zeqhinga lokusebenza	8
9 Ekujoliswe kuko ngokweqhinga lokusebenza kowama-2018–2019.....	8
10 Ulawulo lomngcipheko	8
11 Imisebenzi eyenziwayo nekujoliswe kuko ngonyaka kowama-2018/19.....	9
12 Ekujoliswe kuko ngekota kowama-2018/19	100
13 Ulungelelaniso lokujoliswe kuko nohlahlo lwabiwo-mali ne-MTEF.....	1100
13.1 Iindlela zokusebenza nokuchithwa kwemali.....	Error! Bookmark not defined. 1
14 Isihlomelo A: Ingcaciso ngemisebenzi eyenziwayo	Error! Bookmark not defined.

ULUHLU LWEZIFINYEZO/IZISHUNQULELO

AFS	INgxelo yoNyaka yeMali
AGSA	UMphicothi-zincwadi Jikelele woMzantsi Afrika
BBBEE	UXhotyiso loQoqosho oluBanzi oluSekwe kuBantu abaNtsundu
CFO	IGosa lezeMali eliyiNtloko
DCAS	ISebe leMicimbi yeNkcubeko neMidlalo
DotP	ISebe leNkulumbuso
ERM	ULawulo loMngcipheko weShishini
ERMECO	IKomiti yoLawulo loMngcipheko weShishini
GRAP	INdlela yoBalo-mali eYamkelweyo ngokuBanzi
King III	INgxelo kaKing ngoLawulo lwamaqumrhu
MEC	UMphathiswa wePhondo
MTEF	ISicwangciso-nkqubo seNkcitho sesiThuba esiPhakathi
NTPSRMF	ISicwangciso-nkqubo soLawulo loMngcipheko seCandelo lika-Rhulumente leCandelo loLawulo-mali leSizwe
PanSALB	IBhodi yeeLwimi zaBantu zoMzantsi Afrika
PERSAL	INkqubo yeMivuzo yaBasebenzi
PFMA	UMthetho woLawulo lweMali kaRhulumente
SASL	ULwimi lokuThetha ngezandla loMzantsi Afrika
SMME	Amashishini amancinane aphakathi namakhulu
SCM	ULawulo lweSixokelelwano soNikezelo
SCOPA	IKomiti eSigxina kwiAkhawunti zikaRhulumente STATS SA Iziko leeNkcukacha-manani loMzantsi Afrika
TR	IMithetho yeCandelo loLawulo-mali
WCCC	IKomishini yeNkcubeko yeNtshona Koloni
WCG	URhulumente weNtshona Koloni
WCLC	IKomiti yeeLwimi yeNtshona Koloni
NTR	IMithetho yeCandelo loLawulo-mali leSizwe
PTI	IMiyalelo yeCandelo loLawulo-mali lePhondo

ICANDELO A: INGABULAZIGCAWU

1 Umbono

Ukuxhotyiswa kwabo bonke abantu baseNtshona Koloni ngolwimi; ukuphuhliswa kwesidima somntu ngokuboniswa kwentlonipho efanayo yolwimi; kunye nokukhuthazwa kokuthethwa kweelwimi ezininzi.

2 Umnqophiso

Ukuhlola ukusetyenziswa kweelwimi ezintathu zeNtshona Koloni; ukuhlola ukuphunyezwa koMgaqonkqubo weelwimi waseNtshona Koloni; nokucebisa uMphathiswa ojongene nemicimbi yeelwimi kunye neBhodi yeelwimi yaseMzantsi Afrika kwimiba yeelwimi ePhondweni okanye echaphazela iPhondo.

3. Iimpawu zentsulungeko

Ukunika inkathalo, ukugqibelela, ukubanako ukuphendula, intembeko, inkqubela nokuphakama msinya.

4. Izigunyaziso zomthetho nezinye

4.1 Izigunyaziso zoMgaqo-siseko

Icandelo	Ingcaciso
Umgaqo-siseko weRiphabliki yoMzantsi Afrika wowe-1996	
Icandelo 6(3) kunye no-(4): Ulwimi	Urhulumente weNtshona Koloni kufuneka, ngolawulo kunye namanye amanyathelo, alawule aphinde ahlole ukusetyenziswa kweelwimi ezisemthethweni. Zonke iilwimi ezisemthethweni kufuneka zihlonitshwe ngokulinganayo kwaye ziphathwe ngendlela elinganayo. I-WCLC, ibambisene neSebe leMicimbi yeNkcubeko neMidlalo (DCAS), zinoxanduva lokuhlola nokuvavanya ukuphunyezwa koMgaqo-nkqubo weelwimi wePhondo leNtshona Koloni, owamkelwa ngowama-2005, kwaye kufuneka zenze ingxelo kwiPalamente yePhondo leNtshona Koloni malunga nolu gunyaziso ubuncinane kanye ngonyaka. I-DCAS yongamela i-WCLC kwaye inikezela iKomiti ngolawulo kunye nenkxaso yemali.
Icandelo 30: Ulwimi nenkcubeko	I-WCLC ibonelela ngamathuba kubantu baseNtshona Koloni ukuba basebenzise amalungelo abo olwimi kunye nawenkcubeko ngokuthatha inxaxheba kwiinkqubo nakwiiprojekthi ethi izenze kwaye izixhase.
Icandelo 31: Uluntu lwenkcubeko, inkolo kunye nolwimi	I-WCLC kufuneka iqinisekise ukuba iinkqubo zayo kunye neeprojekthi ziyakuhlonipha ukwahlukana kwenkcubeko yabantu bonke baseNtshona Koloni.
Icandelo 41: Imithetho-siseko yorhulumente wentsebenziswano kunye nobudlelwane nabanye oorhulumente	I-WCLC isebenzisana nazo onke iinkalo zikarhulumente ekwenzeni oko igunyaziselwe kona.
Ishedyuli 4: Iindawo zoMsebenzi zokuVumelana ngoMsebenzi ngokwemithetho yeSizwe neyePhondo	Ngokubhekiselele kumgaqo-nkqubo weelwimi kunye nemimiselo yeelwimi ezisemthethweni ukuza kuma kwinto yokuba izibonelelo zecandelo 6 loMgaqo-siseko zicacise ngokunikezela umsebenzi wolawulo kwiPalamente yePhondo leNtshona Koloni, i-WCLC isebenza ngokusondeleneyo neSebe lezoBugcisa neNkcubeko lesizwe kunye namanye amaziko esizwe malunga nemiba yomgaqo-nkqubo weelwimi.

Icandelo	Ingcaciso
Icandelo 195: lindlela zokuziphatha ezisisiseko kunye nemithetho-siseko elawula ulawulo lukarhulumente	Amagosa eSebe leMicimbi yeNkcubeko neMidlalo anoxanduva lokwenza ugunyaziso lwe-WCLC kufuneka aqinisekise ukusetyenziswa ngokwaneleyo, ngokoqoqosho kunye nokusetyenziswa ngokufanelekileyo kwezixhobo abazinikiweyo. Iinkqubo ezenziwe kwicandelo likarhulumente kufuneka ziveze amalungelo amaninzi ngeendleko eziphantsi.
UMgaqo-siseko weNtshona Koloni, ka-1997 (uMthetho woku-1 ka-1998)	
Icandelo 5	<p>Ngeenjongo zoRhulumente weNtshona Koloni:</p> <p>Ngeenjongo zoRhulumente weNtshona Koloni:</p> <p>(a) Iilwimi ezisemthethweni isiBhulu, isiNgesi nesiXhosa kufuneka zisetyenziswe; kwaye</p> <p>(b) ezi lwimi zichazwe ngentla zikonwabele ukulingana kwazo.</p> <p>I-WCLC kufuneka ijonge ukusetyenziswa kwesiBhulu, isiNgesi nesiXhosa eNtshona Koloni.</p> <p>I-WCLC kufuneka kwakhona iphumeze amanyathelo asebenzayo nangawo okunceda ukuyondelelanisa ubume kunye nokubhekisela phambili ukusetyenziswa kweelwimi ebezisingelwa phantsi zeNtshona Koloni ezibume bazo kunye nokusetyenziswa ngokwembali zayekiswa.</p>

4.2 Izigunyaziso zomthetho

UMthetho	Ireferensi	Ingcaciso
UMthetho iPublic Finance Management Act, ka-1999	UMthetho 1 ka-1999	I-WCLC kufuneka ingenise iingxelo zekota kunye nezonyaka ngokwenziwa komsebenzi wayo kunye neengxelo zemali eziphicothiweyo ngokubhekiselel kwinjongo ecwangcisiweyo ekujoliswe kuko kunyaka-mali ngamnye.
UMthetho wokuSetyenziswa kweelwimi eziseMthethweni, ka-2012	UMthetho 12 ka-2012	Lo Mthetho usebenza kumasebe esizwe, amaqumrhu karhulumente wesizwe nakumashishini karhulumente wesizwe. Ukuba izinto zoMthetho bekufuneka zibe nefuthe kumgaqo-nkqubo nokusetyenziswa kweelwimi eNtshona Koloni, i-WCLC inganegunya lokudlala indima.
UMthetho weBhodi yeeLwimi zoMzantsi Afrika, ka-1995	UMthetho 59 ka-1995	IKomiti yeeLwimi yeNtshona Koloni ibonwa yiBhodi yeeLwimi yaseMazantsi e-Afrika njengeKomiti yayo yeeLwimi yePhondo yeNtshona Koloni. IKomiti inikezela iPanSALB ngeengcebiso ngemicimbi yeelwimi kweli phondo.
UMthetho weelwimi wePhondo leNtshona Koloni, ka-1998	UMthetho 13 ka-1998	<p>I-WCLC kufuneka, phakathi kwezinye izinto:</p> <ul style="list-style-type: none"> ijonge ukusetyenziswa kwesiBhulu, isiNgesi kunye nesiXhosa nguRhulumente weNtshona Koloni; yenze izindululo kuMphathiswa wePhondo nakwiPalamente yePhondo ngalo naluphi na ulawulo olucetywayo okanye olukhoyo, umsebenzi kunye nomgaqo-nkqubo ochaphazela ulwimi eNtshona Koloni; ikhuthaze ngendlela esebenzayo umthetho-siseko wokusetyenziswa kweelwimi ezininzi; ikhuthaze ngendlela esebenzayo uphuhliso lweelwimi ebezifudula zisingelwe phantsi; icebise u-MEC kunye neKomishoni yezeNkcubeko eNtshona Koloni kwimiba yeelwimi kweli Phondo; ize Icebise i-PanSALB kwimiba yeelwimi eNtshona Koloni.
UMthetho iSouth African Language Practitioners' Council Act, ka-2014	UMthetho wesi-8 ka-2014	Xa iBhunga leeNgcali zeelwimi zaseMzantsi Afrika lisekiwe, liza kuba namagunya, phakathi kwezinye izinto, okubhalisa nokuqinisekiswa kweengcali zolwimi ukuba zikulungele ukusebenza, kusekwe nendlela yokuziphatha nokulawulwa komsebenzi weelwimi kweli lizwe.

4.3 Izigunyaziso zomgaqo-nkqubo

UMgaqo-nkqubo	Ingcaciso
UMgaqo-nkqubo weelwimi waseNtshona Koloni (owapapashwa kwi <i>Gazette yePhondo njengo</i> -PN 369/2001 wama-27 kweyeNkanga yowama-2001)	I-WCLC ibopheleleke ekubeni ihlole ukuphunyezwa kwalo mgaqo-nkqubo.

4.4 Izigwebo zenkundla ezifanelekileyo

Azikho.

4.5 Amanyathelo omgaqo-nkqubo acwangcisiweyo

Akakho.

5. Uhlahlelo lwesimo

Ulwimi yinto ebalulekileyo yokuzazi ubuwena nenkcubeko yakho kwaye luza kuhlala lungumba obalulekileyo ekufuneka luphathwe ngobunono. Lusekelezelwe kuMgaqo-siseko njengelungelo lomntu kwaye lukhuselwa ngumthetho wesizwe nowephondo. IKomiti yeeLwimi yeNtshona Koloni iqhubekile ngephulo lolwazi ngokumiliseka uMgaqo-nkqubo woLwimi weNtshona Koloni kunye neNdlela yokuZiphatha yoLwimi.

IKomiti yeeLwimi yeNtshona Koloni isekwe ngokoMthetho weLwimi wePhondo leNtshona Koloni, ngowe-1998. Ukwaniwa ingqalelo yiPanSALB njengeKomiti yeeLwimi yayo kwiPhondo leNtshona Koloni ngokoMthetho weBhodi yeeLwimi zaseMzantsi e-Afrika, kowe-1995. I-WCLC ngoko ke isebenza njengekomiti yeelwimi ecebisa iPanSALB kwimiba yolwimi eNtshona Koloni kwaye isebenzisana neofisi yephondo yePanSALB.

I-WCLC ihlelwe njengeShedyuli yesi-3, icandelo C leziko loluntu lephondo ngomhla woku-1 kweyeSilimela ngowama-2001 ngokoMthetho wokuLawulwa kweeMali zikaRhulumente, kowe-1999. IKomiti iphantsi kolawulo olucwangcisiweyo loMphathiswa wePhondo kwaye inika ingxelo ngokweNtloko yeSebe leMicimbi yeNkcubeko neMidlalo. Umsebenzi wayo uhlolwa yi-DCAS.

Ukuze iqaqambe kumngeni wokukhawulelana nogunyaziso lwayo, i-WCLC iqhubekile:

- ukuhlola ize icebise ngoMgaqo-nkqubo weLwimi waseNtshona Koloni njengoko kuchaziwe kwisicwangciso sokuphumeza esiqulathwe kwingxelo yeendleko;
- ukucebisa amasebe kunye namaziko oRhulumente weNtshona Koloni ngemiba yeelwimi idlula kuMphathiswa weMicimbi yeNkcubeko neMidlalo;
- ukukhuthaza umthetho-siseko wokuthethwa kweelwimi ezininzi;
- ukuphucula ubudlelwane bokusebenza nePanSALB kunye neminye imibutho namaziko eelwimi, kwiphondo, kwisizwe nakumazwe ngamazwe;
- ukukhuthaza uphuhliso lweelwimi ebezisingelwe phantsi kunye nolwimi lwabathetha ngeZandla ukuze kwandiswe ulwazi lwezi lwimi kubemi baseNtshona Koloni;
- ukucebisa uMphathiswa nePanSALB kwimicimbi yeelwimi, nechaphazela iNtshona Koloni;
- kuqhagamshelwane nabo bonke abachaphazelekayo abafanelekileyo bahlale belungelelene ngophando olufanelekileyo ukuze bahlale benolwazi ngemicimbi yolwimi nechaphazela iphondo;
- ukwenza izinto ngobambiswano ukuphuhlisa ukuthethwa kweelwimi ezininzi eNtshona Koloni; baze
- ukuba negalelo entlalweni ngokuqinisekisa ukufikeleleka kolwimi kunye nonxibelelwano olululo, ngokuxhasa uguqulo notoliko lwezi lwimi zichazwe ngentla zisemthethweni.

IKomiti yeeLwimi iza kusebenzisana necandelo leeNkonzo zeeLwimi ukuze ifikelele kwiinjongo zayo. IKomiti iza kugcina intsebenziswano namaziko emfundo ephakamileyo, amasebe ephondo kunye namanye amaziko eelwimi ukuze iphumeze iinjongo zalo.

Ngokotshintsho lwamanani abantu, iKomiti yeeLwimi iza kuqhuba icebisa uMphathiswa namasebe ephondo afanelekileyo ngomgaqo-nkqubo weelwimi nangemiba enxulumene nolwimi.

5.1 Imeko ekusetyenzwa phantsi kwayo

Amalungu amathathu arhoxa ngesithuba seenyanga zokuqala zowama-2017, kubandakanywa uSihlalo omtsha watyunjwa ngoFebruwari 2017. Umsebenzi wolawulo we-WCLC wenziwa ngamagosa aqeshwe yiDCAS.

Ulwimi oluthethwayo emakhayeni kweli phondo (%):

IsiBhulu	IsiXhosa	IsiNgesi	IsiKhoi/isiNama	Ulwimi lokuThetha ngezandla	IsiSuthu
45	30	19.21	0.00	0.00	0.85

STATSA, Community Survey 2016 (Iziphumo zophando)

(Ulwimi oluthethwa kakhulu kumakhaya ngokoBunzima boMntu nangenqanaba leNdawo 2011)

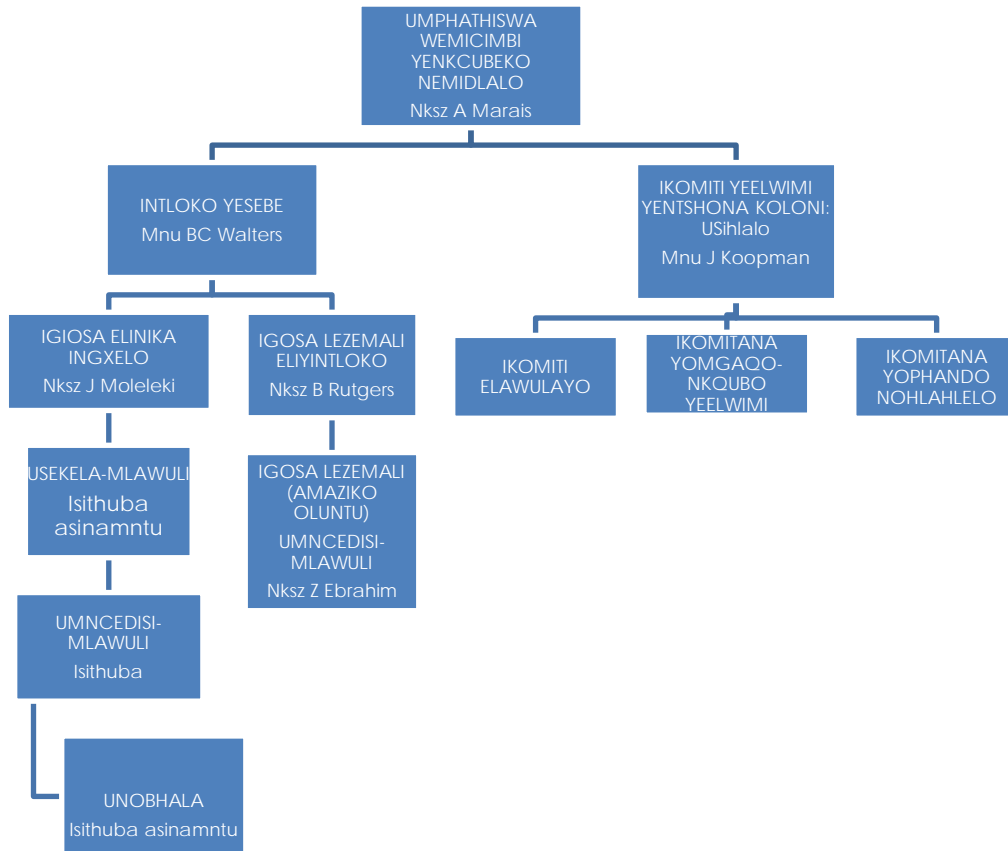
Le theyibhile ingentla ibonisa iilwimi ezithethwa ngabantu. Iinkcukacha zisekelwe kwiziphumo zophando luka-2011 olwalwenziwe ngokweendawo abafumaneka kuzo aba bantu.

Imeko ekusetyenzwa phantsi kwayo yiKomiti yeeLwimi yeNtshona Koloni iqinisekiswa nguMthetho weLwimi wePhondo leNtshona Koloni, wowe-1998, kwaye ubandakanya imiba emithandathu engundoqo:

- ukunikezela iziphumo ezandileyo kukubaluleka ngokulinganayo kweelwimi ezintathu zeNtshona Koloni, ezizezi, isiBhulu, isiXhosa nesiNgesi;
- ukukhuthaza umthetho-siseko wokuthetha iilwimi ezininzi eNtshona Koloni;
- ukukhuthaza ngokusebenzayo ukuphuhliswa kweelwimi ebezikade zisingelwe phantsi kunye noLwimi lokuThetha ngeZandla laseMzantsi Afrika;
- ukuhlolwa kokusetyenziswa kweelwimi ezintathu ezisemthethweni nguRhulumente weNtshona Koloni;
- ukucebisa uMphathiswa kwimiba yolwimi kwizinto ezichaphazela iNtshona Koloni kunye nakulo naluphi na ulawulo olucetywayo, olusetyenziswayo kunye nomgaqo-nkqubo osebenza ngokungqalileyo okanye ngokungangqalanga nemiba yolwimi; kunye
- nokucebisa iPanSALB, namasetyana ayo kunye neKhomishini yeNkcubeko yaseNtshona Koloni ngemiba yolwimi okanye echaphazela iNtshona Koloni.

5.2 Ubume beSebe

Ubume besebe esebenza kulo le Komiti bubonakaliswe kolu luhlu lwezikhundla zabasebenzi bungezantsi.



Ngokwecandelo le-17 loMthetho weelWimi zePhondo leNtshona Koloni, wowe-1998, amagosa aphantsi kwecandelo leeNkonzo zeeLwimi zeSebe leMicimbii yeNkcubeko nemidlalo laseNtshona Koloni lenza umsebenzi wolawulo we-WCLC.

5.3 Ingcaciso ngeenkqubo zeqhinga lokusebenza

Iseshini yesicwangciso seqhinga yabanjwa ngomhla we-18 kuOktobha wama-2017 ngamalungu eKomiti yeelWimi yeNtshona Koloni namagosa eSebe leMicimbi yeNkcubeko nemidlalo.

Iseshini yesicwangciso seqhinga ihlole imisebenzi yeKomiti yeelWimi - izinto ezibe yimpumelelo kwiKomiti, izifizekiso nemingeni, kunye nomsebenzi ochazwe kwangaphambili kwisigaba esilandelayo sokusebenza. Ichonge isidingo sokuzalisa izithuba ezingazaliswanga zobulungu nokwakha kokufunyenweyo kuvavanyo ukuhlola umiliselo loMgaqo-nkqubo weelWimi zePhondo kumasebe karhulumente. Ixhibe ngaphezulu ukuqinisa uthelwano lwayo lweqhinga ukwandisa umiliselo lweprojekti zeelwimi ezininzi neSASL.

6. Iziphumo ezisekelwe kwiinjongo zeqhinga lokusebenza

Isiphumo esisekelwe kwiinjongo yeqhinga lokusebenza	Ukubeka esweni ukuphunyezwa koMgaqo-nkqubo weelwimi waseNtshona Koloni.
Inkcazelo yeNjongo	Ukuqwalasela ukuhlolwa kwempumelelo yeenjongo zoMgaqo-nkqubo weelwimi kuRhulumente weNtshona Koloni, kunye nokunikezela ingcebiso efanelekileyo kulo mba.

Unxulumano neenjongo ezicwangcisiweyo zePhondo

Iinjongo ezicwangcisiweyo zePhondo ngowama-2015 ukuya kowama-2020 zezi zilandelayo:



Iinjongo ezicwangcisiweyo zeKomiti yeelwimi zilungelelaniswe neenjongo ezicwangcisiweyo zePhondo ezimbini (ii-PSG) zoRhulumente weNtshona Koloni:

- PSG 3: Ukwandisa impilo-ntle, ukhuseleko nokujongana ngqo neengxaki ekuhlaleni.
- PSG 5: Ukuzinzisa ulawulo olululo nokuhanjiswa kweenkonzo ngentsebenziswano nokulungelelaniswa kwendawo.

PSG 3	<p>I-WCLC iyakuxhasa ukuphathwa ngokulinganayo kweelwimi ezintathu ezisemthethweni zeNtshona Koloni; kulungiswa imeko yokungalingani kweelwimi ebangelwe lixesha langaphambili; nokuphuhlisa nokukhuthaza iilwimi ezazifudula zisingelwa phantsi zephondo noLwimi lokuThetha ngeZandla laseMzantsi Afrika.</p> <p>Ukuphunyezwa okubonakalayo koMgaqo-nkqubo weelwimi weNtshona Koloni kubandakanya nokubonelela ngeenkono ezisemgangathweni zohlelo, uguqulelo nokutolika kumasebe kaRhulumente waseNtshona Koloni. Oku kwandisa ukubanako kwamasebe ukuqhagamshelana nabantu ngolwimi abalufunda kakuhle.</p> <p>Uqhagamshelwano olungcono lukhokelela ekuphucukeni kokuhanjiswa kweenkonzo. Ukuhanjiswa kweenkonzo ngendlela engcono kwandisa impilo-ntle nokhuseleko eNtshona Koloni kwaye kunegalelo ukujongana ngqo neengxaki ekuhlaleni.</p>
PSG 5	<p>I-WCLC ibeka esweni kwaye ixhasa ukuphunyezwa koMthetho weelwimi weNtshona Koloni, we-1998, noMgaqo-nkqubo weelwimi weNtshona Koloni. Ngokwandisa ukukwazi kukaRhulumente weNtshona Koloni ukuqhagamshelana nabantu ngolwimi abalufunda kakuhle, oku kwandisa umgangatho wolawulo kwaye kuphucula ukuhanjiswa kweenkonzo ezimanyanisiweyo ngokusebenzisana okuza kuba luncedo macala.</p>

ICANDELO B: IINJONGO ZEQHINGA

7. Inkqubo: IKomiti yeeLwimi yeNtshona Koloni

Ukukhuthaza ukusetyenziswa kweelwimi ezintathu ezisemthethweni zaseNtshona Koloni, ezizezi, isiBhulu, isiXhosa nesiNgesi, ngurhulumente wephondo norhulumente wasekuhlaleni kweli phondo.

8. Iinjongo zeqhinga lokusebenza

Injongo yeqhinga lokusebenza	Ukubeka esweni nokucebisa ngokuphunyezwa koMgaqo-nkqubo weelwimi weNtshona Koloni.
Inkcazelo yenjongo	Ukubeka esweni nokucebisa ngokuphunyezwa koMgaqo-nkqubo weelwimi weNtshona Koloni kuRhulumente weNtshona Koloni.
Ekusekelwe kuko	Uphando lokuhlola ukuphunyezwa koMgaqo-nkqubo weelwimi waseNtshona Koloni kwiphondo. Ingxelo e-1 yonyaka ye-WCLC. Iintlanganiso ezi-4 zokunika iingcebiso.
Inkcazo	Ukwenza uluntu lubandakanyeke; ukwandisa umgangatho wokwazisa ngokuba sempilweni nangokhuseleko; ukujongana neengxaki zasekuhlaleni; ukuxhasa ulawulo olululo; nokuxhasa ukunikezelwa kweenkonzo ngokwentsebenziswano eluncedo macala.
Unxulumano	PSG3

9. Ekujoliswe kuko ngonyaka ngokweqhinga lokusebenza kowama-2018–2019

Umsebenzi owenziwayo	Ekujoliswe kuko ngokweqhinga lokusebenza	Umsebenzi owenziwayo/ophicot hiweyo			Umsebenzi oqikelelwa kowama-2017/18	Ekujoliswe kuko kwisigaba sexesha eliphakathi				
		2014/15	2015/16	2016/17		2018/19	2019/20	2020/21	2021/2022	2022/23
Inani longenelelo ukubeka esweni nokucebisa ukuphunyezwa koMgaqo-nkqubo weelwimi waseNtshona Koloni	R45 000	11	14	9	8	8	8	8	8	8

10 Ulawulo lomngcipheko

Umngcipheko: Ukumiselwa ngethuba kwe -WCLC emelwe ngokupheleleyo (ngokoLwimi oluthethwa kwiphondo noLwimi lokuThetha ngeZandla lwaseMzantsi Afrika) kunegalelo xa kuthathwa izigqibo ngezinto.

Ungenelelo: • Ukusetyenziswa koMthetho weelwimi weNtshona Koloni, uMthetho 13 ka-1998 okhokhela inkqubo yokutyunjwa kwabamele rhoqo kwiminyaka emithathu. Ukuza kuthi ga ngoku iKomiti eSigxina yePalamente icele ukutyunjwa kwabantu, ngokukufaka oko kupapasho lwe-elektroniki nakwezinye. Abagqatswa ngoko kudliwano nabo indlebe yiKomiti esisigxina ngothethwano neNkonzo yeeLwimi yeSebe. IKomiti esisigxina ngoko ithumela uluhlu oluncitshisiweyo kuMphathiswa weSebe othi atyumbe amalungu ali-11 kolo luhlu luncitshisiweyo. Kuwo onke amaqonga afanelekileyo abantu abathetha ngezandla luyakhuthazwa ukuba luzifake izicelo okanye lube nabantu elibatyumbayo ukuba babamele. Uluhlu lweenkcukacha zeSASL olulungiselelwe iinkonzo zolwimi oluthethwa ngezandla xa kuvela isidingo. Icandelo leNkonzo yeeLwimi kwiSebe leMicimbi yeNkcubeko neMidlalo lisebenza neKomiti yeeLwimi ekhoyo

ukukhuthaza nokuxhasa ukuba kuphinde kufakwe izicelo okanye kungqalwe ebantwini abanezakhono.

11. Imisebenzi eyenziwayo nekujoliswe kuko ngonyaka kowama-2018/19

Umsebenzi owenziwayo wenkqubo	Umsebenzi owenziweyo/ophicothiweyo			Umsebenzi oqikelelwayo kowama-2017/18	Ekujoliswe kuko kwisigaba sexesha eliphakathi			Umsebenzi owenziwayo wenkqubo	Umsebenzi owenziweyo/ophicothiweyo
	2014/15	2015/16	2016/17		2018/19	2019/20	2020/21	2021/22	2022/23
1.1	Inani lamaphulo ophando ngonyaka ophando/okulandelela/ eeprojekthi zokwazisa okujonga umsebenzi wokuphunyezwa komgaqo-nkqubo weLwimi waseNtshona Koloni	3	2	2	1	1	1	1	1
1.2	Inani leengxelo zonyaka ezipapashiweyo ze-WCLC	1	1	1	1	1	1	1	1
1.3	Inani leentlanganiso ezibanjiweyo ukunceda uMgaqo-nkqubo weLwimi weNtshona Koloni	10	6	6	6	6	6	6	6

12. Ekujoliswe kuko ngekota kowama-2017/18

Umsebenzi owenziwayo wenkqubo	Unxulumano nenombolo ye-PSG	Ixesha lokwenza ingxelo	Ekujoliswe kuko kowama-2018/19	Ikota			
				Yoku-1	Yesi-2	Yesi-3	Yesi-4
1.1 Inani lamaphulo ophando ngonyaka ophando/okulandelela/eeprojekthi zokwazisa okujonga umsebenzi wokuphunyezwa komgaqo-nkqubo weLwimi waseNtshona Koloni	Ye-3 neye-5	Ngonyaka	1	-	-	1	-
1.2 Inani leengxelo zonyaka ezipapashiweyo ze-WCLC	Ye-3 neye-5	Ngonyaka	1	-	1		-
1.3 Inani leentlanganiso ezibanjiweyo ukunceda uMgaqo-nkqubo weLwimi weNtshona Koloni	Ye-3 neye-5	Ngekota	6	1	2	2	1

13. Ulungelelaniso lokujoliswe kuko nohlahlo lwabiwo-mali ne-MTEF

Uqikelelo lwenkcitho

IKomiti yeLwimi yeNtshona Koloni

Inkqubo	Isiphumo esiphicothiweyo			Uqikelelo lwenkcitho	Uqikelelo lwenkcitho yesigaba sexesha eliphakathi		
	2014/15	2015/16	2016/17		2017/18	2018/19	2020/21
Amawaka e-R							
IKomiti yeLwimi yeNtshona Koloni	238	776	734	234	267	281	295
Iyonke	238	776	734	234	267	281	295
Iintlawulo zithelekiswa neNgxowa-mali yeNgeniso yeSizwe	-	-	-				

Iyonke Iphelele	238	776	734	234	267	281	295
Ukukhulwa kooqoqosho							
Iintlawulo ezimiyo	238	776	734	234	267	281	295
Imivuzo yabasebenzi							
Iimpahla neenkonzozo ezizezi:							
Unxibelelwano							
Iinkonzo zekhompuyutha					18	19	20
Abacebisi, oono		60	12	20	48	50	52
Ikhontrakhi neenkonzozo ezizodwa							
Uluhlu lweempahla	2						
Ukugcinwa kakuhle kunye neendleko zokusebenza							
Izivumelwano zerenti ezisebenzayo							
Uhambo neNkxaso-mali	5	8	21	12	24	24	28
Iintlawulo zophicotho	122	60	73	72	80	84	86
Ukwenza iintengiso	6	14					
* Ezinye	103	634	628	130	97	104	109
Inzala nokurenta umhlaba							
Intengiselwano ngemali							
Ikwiasethi zexabiso namatyala							
Ukhutshelo-mali nezibonelelo:	-	-	-	-	-	-	-
Amaphondo noomasipala							
Ii-Arhente nee-akhawunti zamasebe							
Iiyunivesithi neeteknikhon							
Amashishini karhulumente nawabucala							
Oorhulumente bamanye amazwe nemibutho							
Iyamazwe ngamazwe							
Amaziko angenzi ngeniso							
Ezangaphakathi							
Iintlawulo kwii-asethi ezinkulu	-	-	-	-	-	-	-
Izakhiwo kunye nezinto ezimileyo							
Oomatshini kunye nezixhobo							
Iimpahla zexabiso							
IiSoftwe nezinye iimpahla zexabiso ezingaphathekiyo							
Umhlaba neempahla zexabiso ezizezi:							
Imbuyekezo eyenziwe							
Iyayinkunzi							
Iyonke Iphelele	238	776	734	234	267	281	295

*Iquka izibonelelo ezikhutshwa xa iKomiti yeelwimi ihlangene

13.1 Iindlela zokusebenza nokuchithwa kwemali

Uhlahlo lwabiwo-mali lweKomiti yeelwimi lusetyenziswa ngokukodwa kulawulo kunye nenkcitho yesebe. Abasebenzi beSebe leMicimbi yeNkcubeko neMidlalo bancedisa i-WCLC ekwenzeni abagunyaziswe kona ngokunika inkxaso kwimiba yomsebenzi.

Icandelo C:

Akusebenzi oku apha.

Isihlomelo A: Ingcaciso yemisebenzi eyenziwayo

Umgqaliselo womsebenzi owenziwayo weqhinga lokusebenza

1.1	Isihloko somsebenzi	Amaxesha ebekufuneke ungenelelo lokubeka esweni nokucebisa ngokuphunyezwa koMgaqo-nkqubo weelwimi weNtshona Koloni
	Inkcazelo emfutshane	Ukuququzelela, yokubeka esweni nokucebisa ngokuphunyezwa koMgaqo-nkqubo weelwimi weNtshona Koloni kuRhulumente weNtshona Koloni
	Injongo/ukubaluleka	Ukuqinisekisa ukuba abathetha iilwimi ezisemthethweni zeNtshona Koloni banethuba lokusebenzisa iilwimi zabo nokukhuthaza inkqubela-phambili malunga nokuphunyezwa koMgaqo-nkqubo weelwimi
	Umthombo / ukuqokelelwa kweenkcukacha	Uphando okanye uphicotho-zincwadi lokuphunyezwa koMgaqo-nkqubo weelwimi
	Indlela yokubala	Uhlalutyo novimba kujongwa ubungakanani nomgangatho
	Unyino kwilinkcukacha	Ubungakanani bezixhobo zokwenza uphando ezinokujonga umlinganiselo wokuphunyezwa koMgaqo-nkqubo weelwimi
	Uhlobo lomsebenzi	Isiphumo
	Uhlobo lokubala	Olunganyukiyo
	Ixesha lokwenza ingxelo	Ngonyaka
	Ngumsebenzi omtsha	Hayi
	Umsebenzi ofunekayo (Isiphumo)	Ngokwethagethi
	Onoxanduva lomsebenzi	Umlawuli onoxanduva
	Umngcipheko ophambili	Amasebe asenokungaziphumezi izindululo zeKomiti yeelwimi. Umngcipheko ungalungelelaniswa ngoqhagamshelwano olusebenzayo phakathi kweKomiti yeelwimi yeNtshona Koloni namasebe oRhulumente weNtshona Koloni

Ingcaciso yemisebenzi eyenziweyo

1.2	Isihloko somsebenzi	Inani lamaphulo ophando/okwazisa ajonga ukuphunyezwa koMgaqo-nkqubo weelwimi waseNtshona Koloni
	Inkcazelo emfutshane	Ukubeka iliso kukuphunyezwa koMgaqo-nkqubo weelwimi waseNtshona Koloni kuRhulumente weNtshona Koloni
	Injongo/ukubaluleka	Ukuqinisekisa ukuba abantu abathetha ulwimi lwabo lweenkobe kwilwimi ezisemthethweni zaseNtshona Koloni banethuba lokusebenzisa iilwimi zabo nokunyanzelisa inkqubela ngokubhekiselele ekuphunyezweni koMgaqonkqubo weelwimi
	Umthombo/ukuqokelelwa kweenkcukacha	Uphando okanye imibuzo yokuphunyezwa koMgaqo-nkqubo weelwimi okanye amaphulo okwazisa okanye iiprojekthi zokulandelela
	Indlela yokubala	Uhlalutyo novimba kujongwa ubungakanani nomgangatho
	Unyino kwilinkcukacha	Ingaba ungakanani umyinge wokusetyenziswa kwezixhobo zokuphunyezwa koMgaqo-nkqubo weelwimi
	Uhlobo lomsebenzi	Iziphumo
	Uhlobo lokubala	Olongezayo
	Ixesha lokwenza ingxelo	Ngonyaka
	Ngumsebenzi omtsha	Hayi
	Umsebenzi ofunekayo (Isiphumo)	Njengoko kucwangcisiwe
	Onoxanduva lomsebenzi	Umlawuli onoxanduva
	Umngcipheko ophambili	Ukuhlola ukuphunyezwa koMgaqo-nkqubo weelwimi waseNtshona Koloni kuRhulumente weNtshona Koloni

1.3	Isihloko somsebenzi	Inani leengxelo zonyaka ezpapashiweyo ze-WCLC
	Inkcazelo emfutshane	Ukupapasha ingxelo yoNyaka ye-WCLC
	Injongo/ukubaluleka	Ukwazisa uluntu ngomsebenzi weziko
	Umthombo/ukuqokelelwa kweenkcukacha	lingxelo nemizuzu yentlanganiso jikelele kunye neentlanganiso zekomiti
	Indlela yokubala	linkcukacha zamanani nohlalutyo
	Unyino kwilinkcukacha	Ulibaziseko ekufakweni kwamaxwebhu
	Uhlobo lomsebenzi	Ifuthe
	Uhlobo lokubala	Olunganyukiyo
	Ixesha lokwenza Ingxelo	Ngonyaka
	Ngumsebenzi omtsha	Hayi
	Umsebenzi ofunekayo (Isiphumo)	Ngokwethageathi
	Onoxanduva lomsebenzi	Umlawuli onoxanduva
	Umngcipheko ophambili	Ulibaziseko ekufakweni kwamaxwebhu nasekugqityweni kweeprojekthi

1.4	Isihloko somsebenzi	Inani leentlanganiso ezibanjliweyo ukunceda uMgaqo-nkqubo weelwimi weNtshona Koloni
	Inkcazelo emfutshane	Intlanganiso ebanjelwe ukuchonga/ukuxoxa imiba yolwimi nokunika uMphathiswa iingcebiso eziphathelele kwimiba yeelwimi echaphazela iNtshona Koloni
	Injongo/ukubaluleka	Ukwazisa uMphathiswa malunga nemiba ephathelele kwimiba yeelwimi eNtshona Koloni ukuze akwazi ukwenza izigqibo ezineenkukacha aze aqinisekise ngokuphunyezwa okukuko koMgaqo-nkqubo weelwimi
	Umthombo/ukuqokelelwa kweenkcukacha	lingxelo, ii-ajenda kunye nemizuzu yeentlanganiso zikawonke wonke kunye nezeekomitana
	Indlela yokubala	Inani leengxelo ezingeniswe kuMphathiswa nakwiKomishini yeNkcubeko yaseNtshona Koloni
	Unyino kwilinkcukacha	Usilelo ekungeniseni amaxwebhu
	Uhlobo lomsebenzi	Ifuthe
	Uhlobo lokubala	Olunyukayo
	Ixesha lokwenza Ingxelo	Ngekota
	Ngumsebenzi omtsha	Hayi
	Umsebenzi ofunekayo (Isiphumo)	Ngokwethageathi
	Onoxanduva lomsebenzi	Umlawuli onoxanduva
	Umngcipheko ophambili	Intsilelo kwintsebenziswano ethe ngqo eyenzeka rhoqo phakathi koMphathiswa neKomiti yeelwimi yeNtshona Koloni. Loo mngcipheko ungancitshiswa ngokungeniswa kweengxelo kwi-ofisi yoMphathiswa ngexesha

Western Cape Language Committee
Protea Assurance Building, Greenmarket Square, Cape Town, 8001
Postal Address: Private Bag X9067, Cape Town, 8000
tel: +27 483 9669 fax: +27 21 483 9673
Email: Liezl.Jansen@westerncape.gov.za

Ikomiti yeeLwimi yeNtshona Koloni
Kwisakhiwo iProtea Assurance, eGreenmarket Square, eKapa, 8001
Idilesi yePosi: Private Bag X9067, Cape Town, 8000
umnxeba: +27 483 9669 ifeksi: +27 21 483 9673
i-imeyile: Liezl.Jansen@westerncape.gov.za

Wes-Kaapse Taalkomitee
Protea Assuransie Gebou, Groentemarkplein, Kaapstad, 8001
Posadres: Privaatsak X9067, Kaapstad, 8000
tel: +27 483 9669 faks: +27 21 483 9673
e-pos: Liezl.Jansen@westerncape.gov.za



**Western Cape
Government**

Cultural Affairs and Sport

PR54/2018 - ISBN: 978-0-621-46152-7